

# F21

## Fingerprint time attendance and access control terminal



F21 is the first time attendance and access control terminal applying the most advanced SilkID technology. It not only possesses outstandingly high identification rate towards dry, wet and rough finger, but also provides the utmost security by its live finger detecting capability, as well as photo taking function which enables attendance photo and Photo ID (optional).

In addition, with the brand new ZMM220 hardware platform, its clock rate can attain 1.2GHz. Such speedy hardware platform and fingerprint algorithm greatly enhance the speed of fingerprint verification.

### Features

- 2.4-inch TFT color screen
- SilkID fingerprint reader with living object detecting function
- Multiple Verification Modes: Multi-verification methods (card is optional) providing user various choices
- Full Access Control Features: Anti-passback, access control interface for 3rd party electric lock, door sensor, exit button, alarm and doorbell
- Camera Function: record photo, photo ID (optional)
- Built-in auxiliary input with enhanced flexibility to link with wired detector or emergency switch

# Specifications

Display	2.4-inch TFT LCD Color Screen
Fingerprint Capacity	3000
Card Capacity	5000(Optional) ID or mifare card
Transaction Capacity	100,000
Sensor	SilkID Sensor
Algorithm Version	ZKFinger VX10.0
Communication	RS232/485, TCP/IP, USB-host
Access Control Interface	3rd Party Electric Lock, Door Sensor, Exit Button, Alarm, Doorbell
Wiegand Signal	Input, Output,SRB
Aux. Input	1ea for linkage function
Functions	DST, Automatic Status Switch, Anti-passback, Scheduled-Bell, Printer(Optional)
Power Supply	12V DC, 3A
Operating Temperature	0 °C- 45 °C
Operating Humidity	20%-80%
SDK and software	Standalone SDK, ZKAccess3.5 software

# Optional Accessories



RFID Reader



Exit Button



Electric Lock

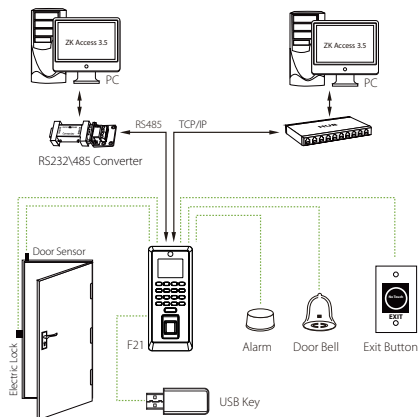


Alarm

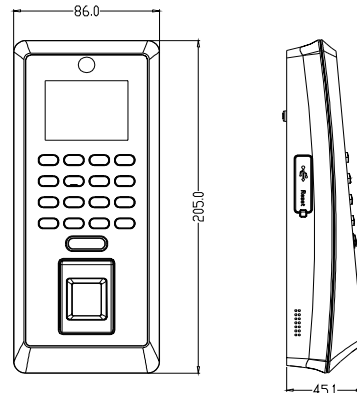


Sensor

# Configuration



# Dimensions (mm)



ZKTeco Inc.  
E-mail: [sales@zkteco.com](mailto:sales@zkteco.com)  
[www.zkteco.com](http://www.zkteco.com)

© Copyright 2015 ZKTeco Inc. ZKTeco Logo is a registered trademark of ZKTeco or a related company. All other product and company names mentioned are used for identification purposes only and may be the trademarks of their respective owners. All specifications are subject to change without notice. All rights reserved.