

# Quick Start Guide

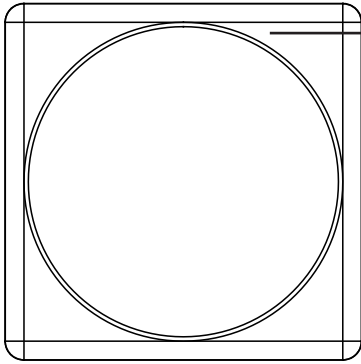
UHF Reader

---

Version: 1.0.1

# 1 Overview

## Front View



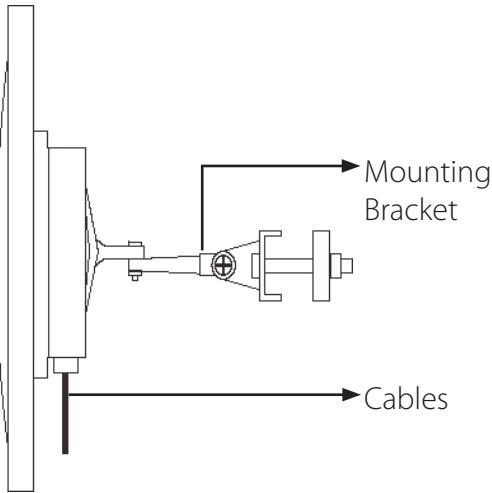
Antenna

Working Frequency: 902MHz ~ 928MHz

Read Range: UHF6 (6 meters)

UHF12 (12 meters)

## Lateral View and Interface



## Cable Definition

NO.	Color	Function
1	Red	+12V
2	Black	GND
3	Purple	Trigger Point (Active-low)
4	Green	Wiegand D0
5	White	Wiegand D1
6	Grey	GND
7	Blue	TXD(RS232)
8	Yellow	RXD(RS232)

## NOTE:

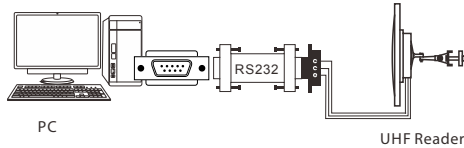
- 1) In "Trigger Read" work mode, the reader will not read cards before a low level signal to "Trigger Point" is delivered. "Trigger Point" is mainly used for working with the ground sensor of vehicle parking system.
- 2) In "Always Read" work mode, once the card in the effective range, the reader will output the card number via Wiegand continually.

## 2. Safety Precautions

- 1) The reader working voltage ranges from DC9V to DC16V, it is recommended to use DC12V /3A power supply.
- 2) The default setting of the reader are as follow:
  - Wiegand 26 output;
  - Work Mode: Always Read;
  - Baud Rate: 9600.
- 3) Please wire according to the cable definition.

## 3. Modifying Setting via Demo

### 1) RS232 Connection



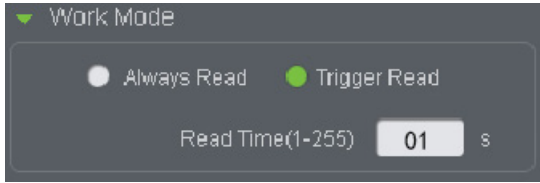
### 2) Software Introduction

The screenshot displays the software configuration interface for the UHF Reader. It is organized into several sections:

- Communication:** Com Port (COM1), Baudrate (9600), and buttons for Connect and Disconnect.
- Baudrate Setting:** Baudrate (38400).
- Work Mode:** Radio buttons for Always Read and Trigger Read (selected), and a Read Time(1-255) field set to 01 s.
- Reader Indicate:** Baudrate (checked) and a green checkmark.
- Weigand Setting:** Radio buttons for 26 (selected) and 34.
- RF Setting:** Power(0-63) field and Freq field.

At the bottom, there are four main action buttons: Read actual confi., Factory Default, Save, and Read Card. Below these is a table with the following headers: No., ID, Status, Times, and EPC Le... The table body is currently empty.

- **Work Mode Settings**



**Always Read:** Once the setting is applied, if the card is in the effective range, the reader will output the card number via Wiegand continually.

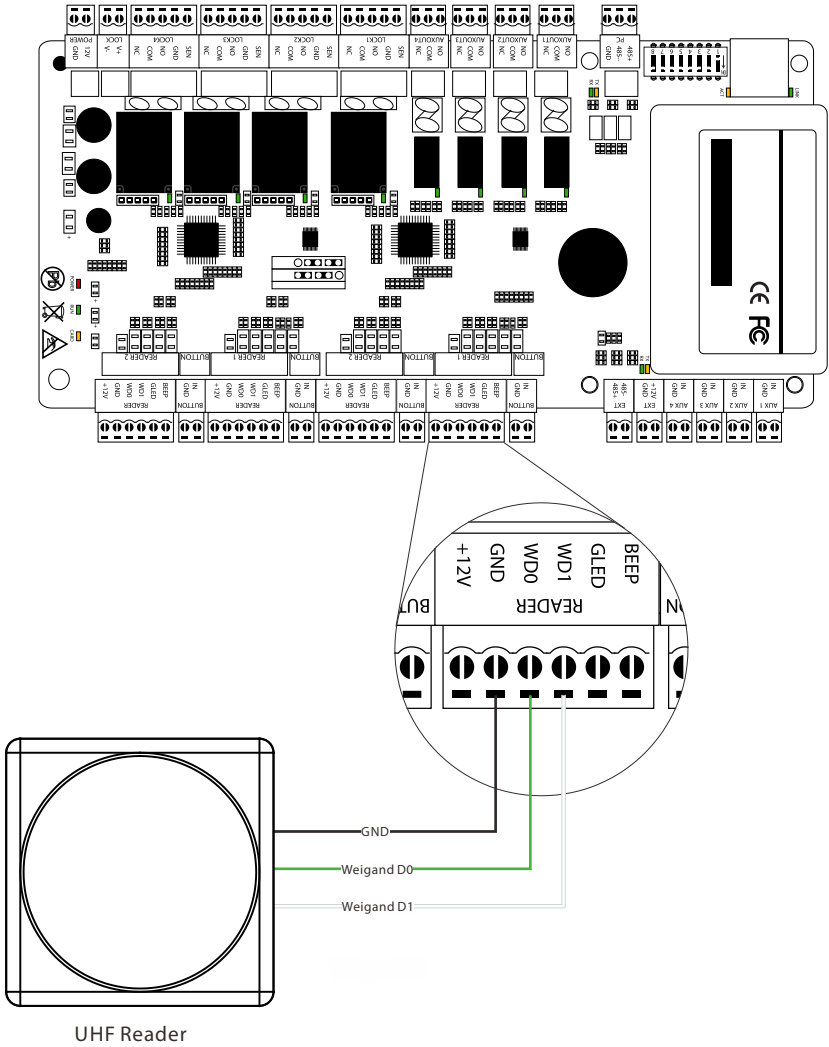
**Trigger Read:** Once the setting is applied, the reader will not read the card before a low level signal to "Trigger Point" is delivered. "Trigger Point" is mainly used for working with the ground sensor of vehicle parking system. The Reading time is also modifiable.

- **Radio Frequency Parameters Settings**



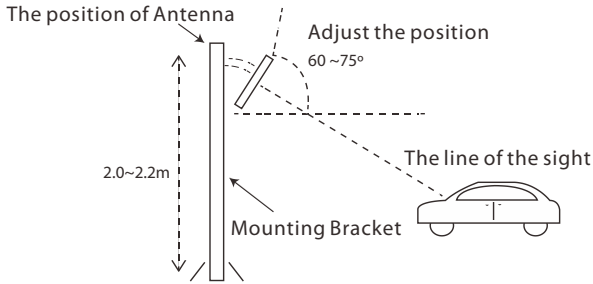
The power ranges from 1 (18dBm) to 9 (26dBm).

# 4. Access Control Panels Connection

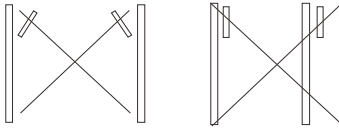


# 5. Installation

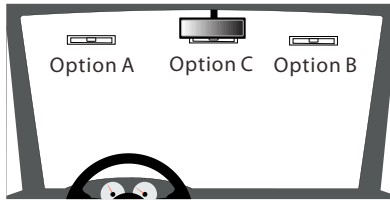
- Please install the directional antenna with lower elevation angle of 60~75 to suit the correct line of sight.



- Avoid installing the reader against to another.



- The position of the tag/card in the vehicle is as follows:



- The reader detection distance may vary depending on rain, snow or wind.

